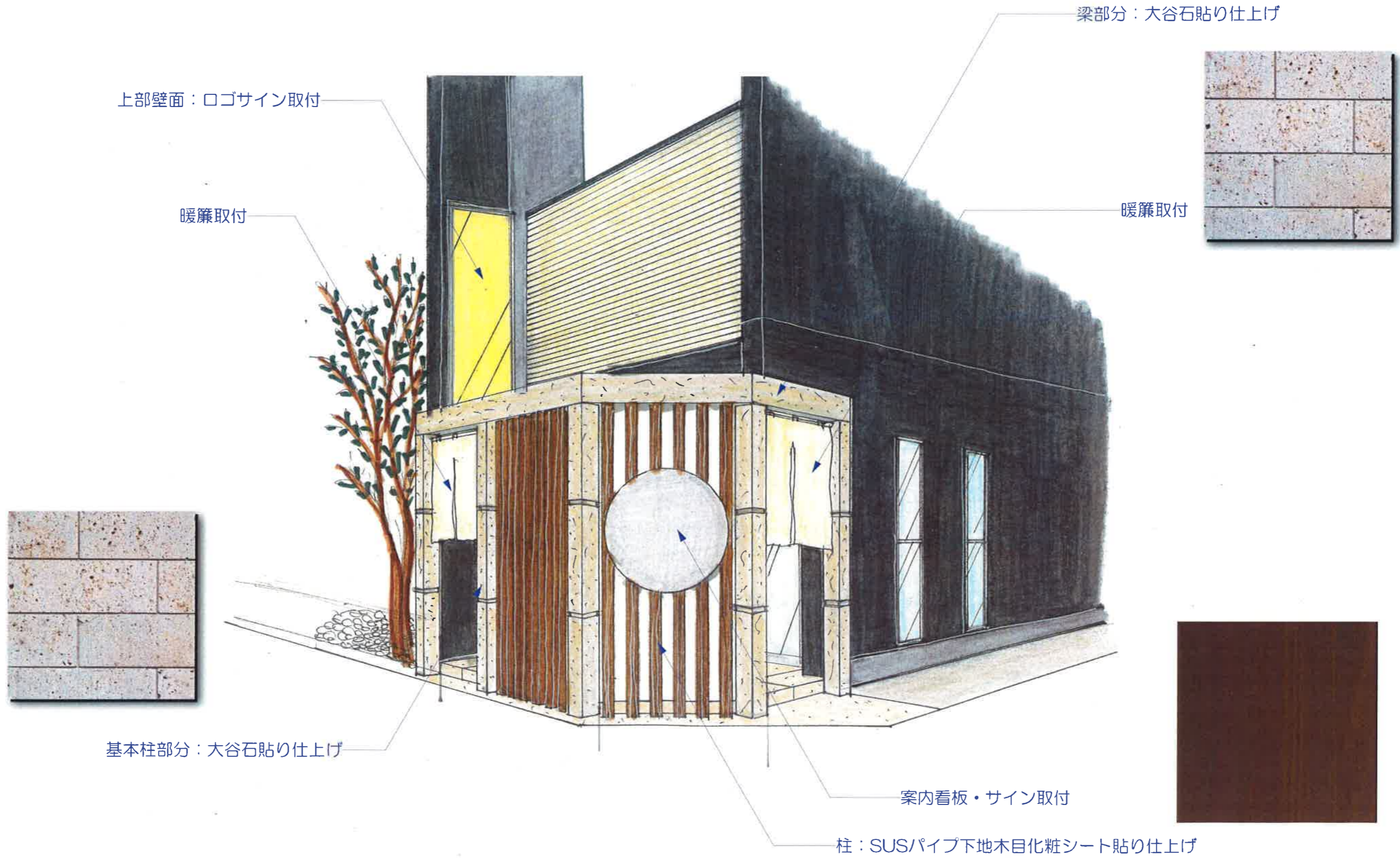
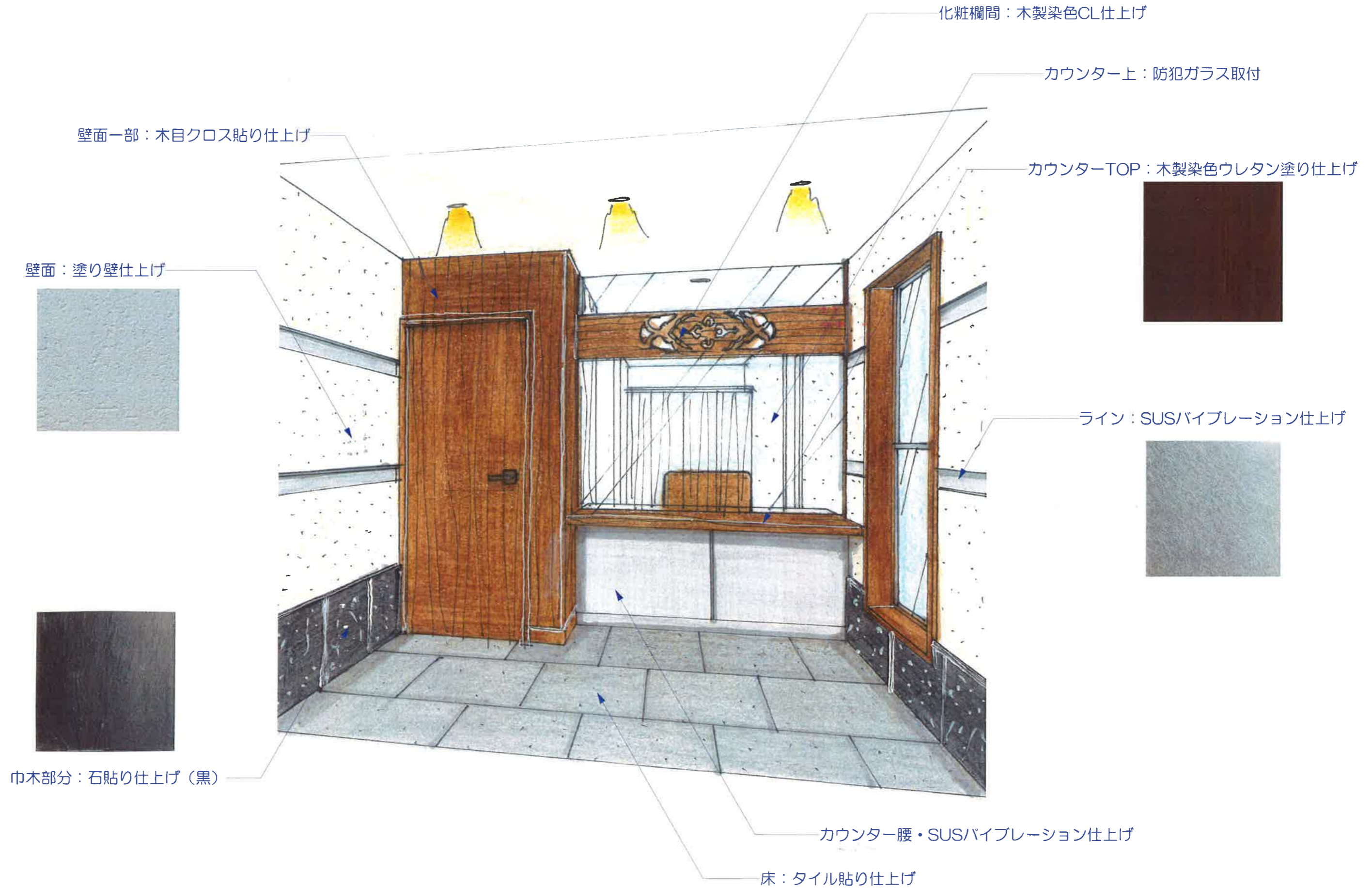
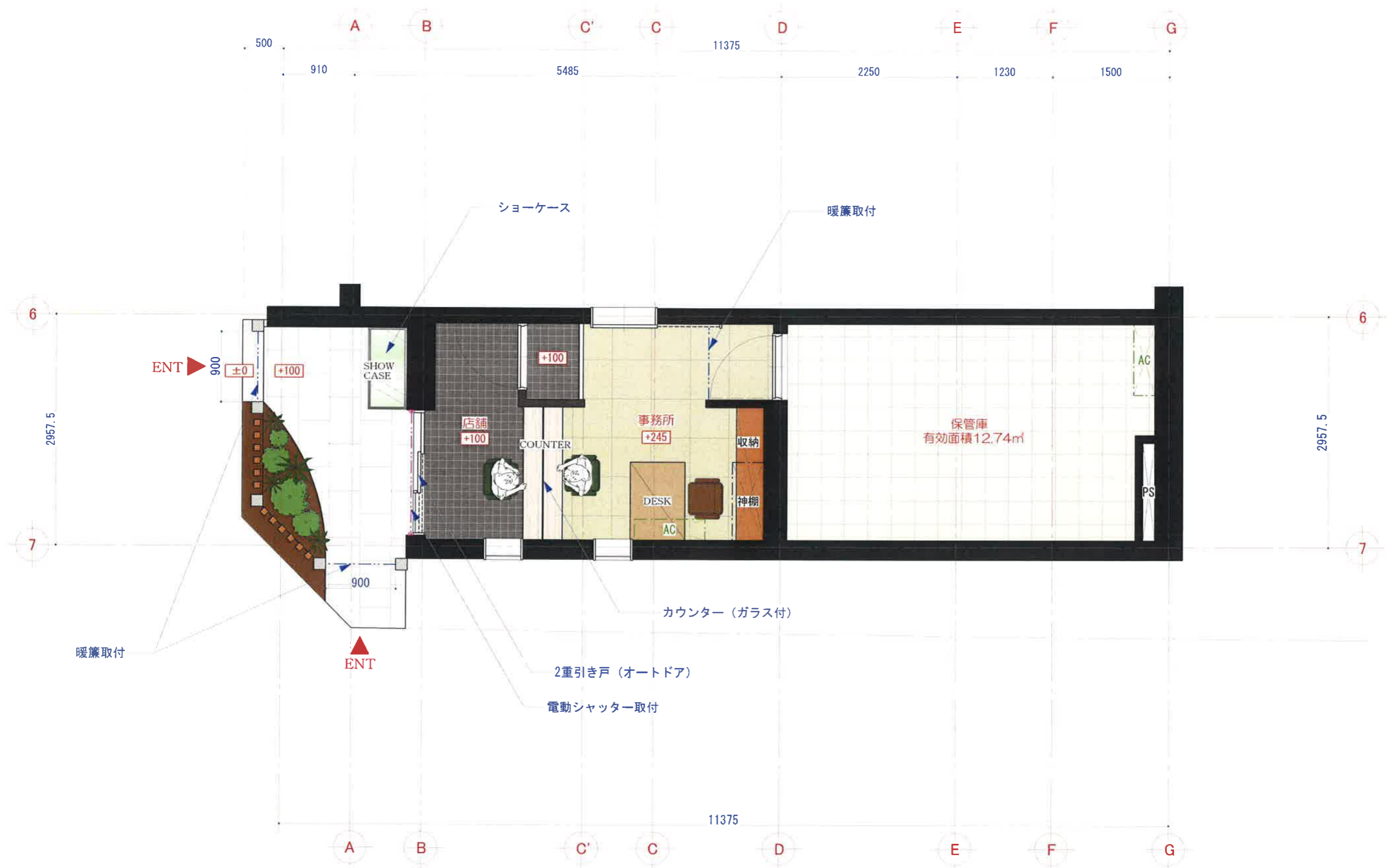


(仮称) 江古田 まるや

新装計画



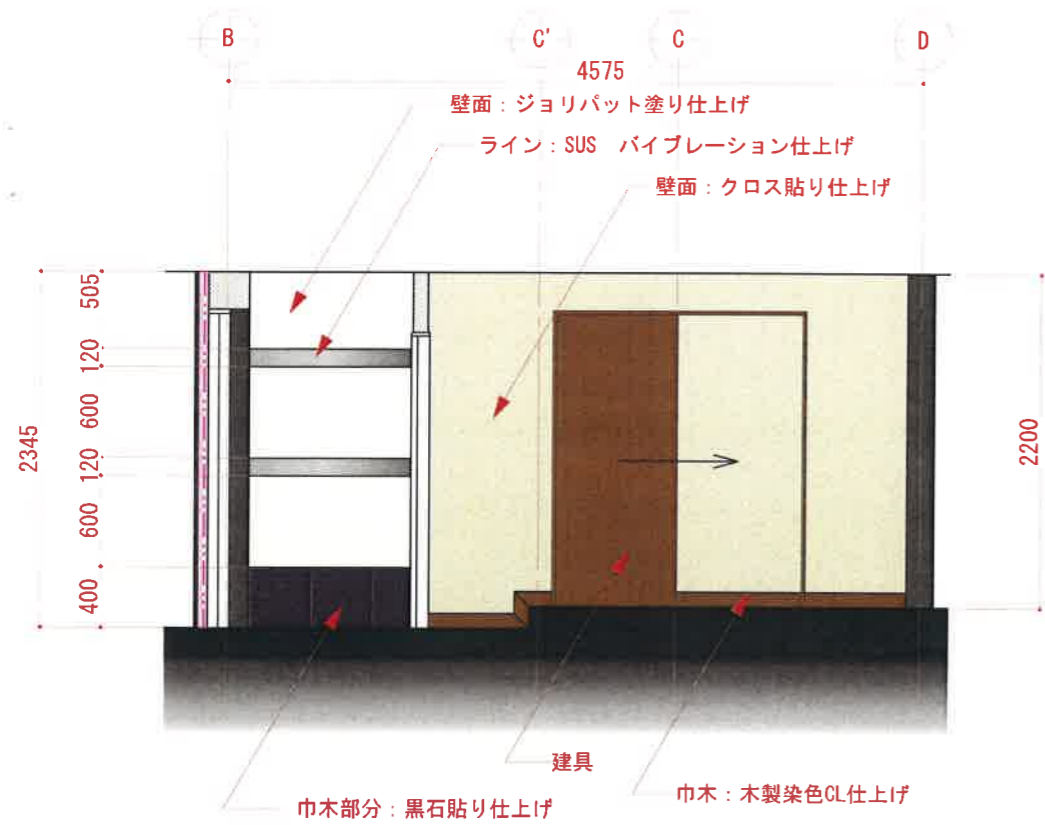




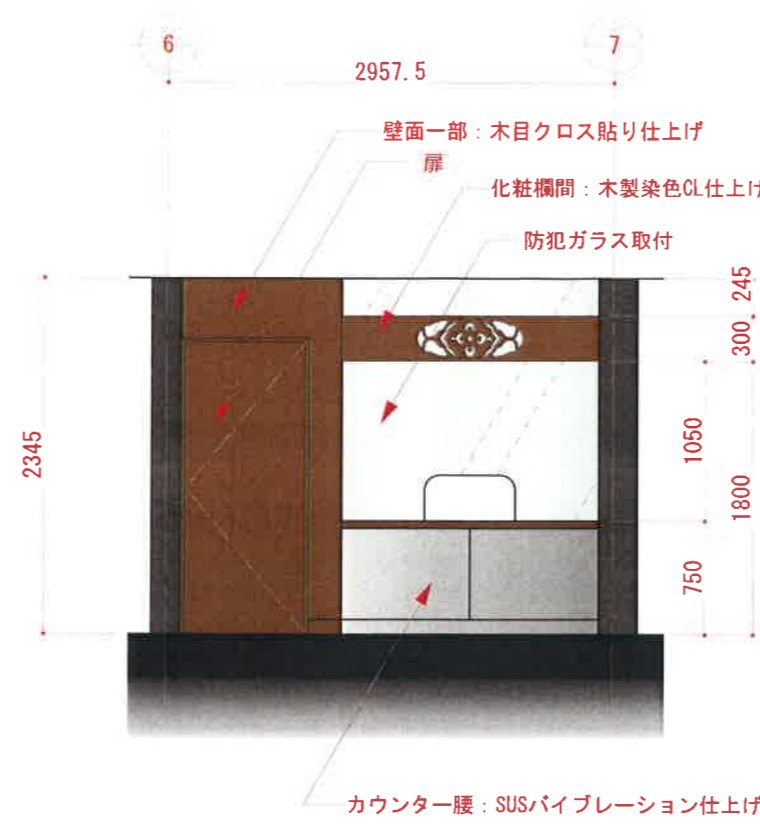
	3灯
DL LZD-92004YWE (DAIKO)	
LED 消費電力9.5W 白熱灯 100W相当	
	
	1灯
DL LZD-92006AW (DAIKO)	
LED 消費電力14.5W FHT 32W相当	
	
	2灯
BL LZB-92570WW (DAIKO)	
LED照明 FHP32W×3灯相当 (40W)	
	

	4灯
LED照明	
FL40W×2タイプ	
	

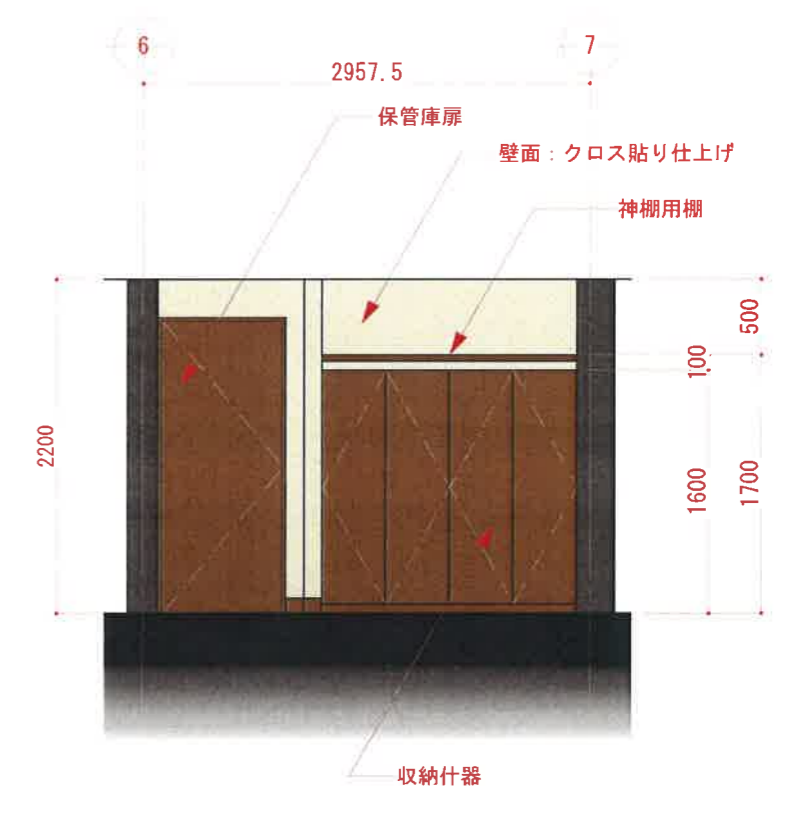




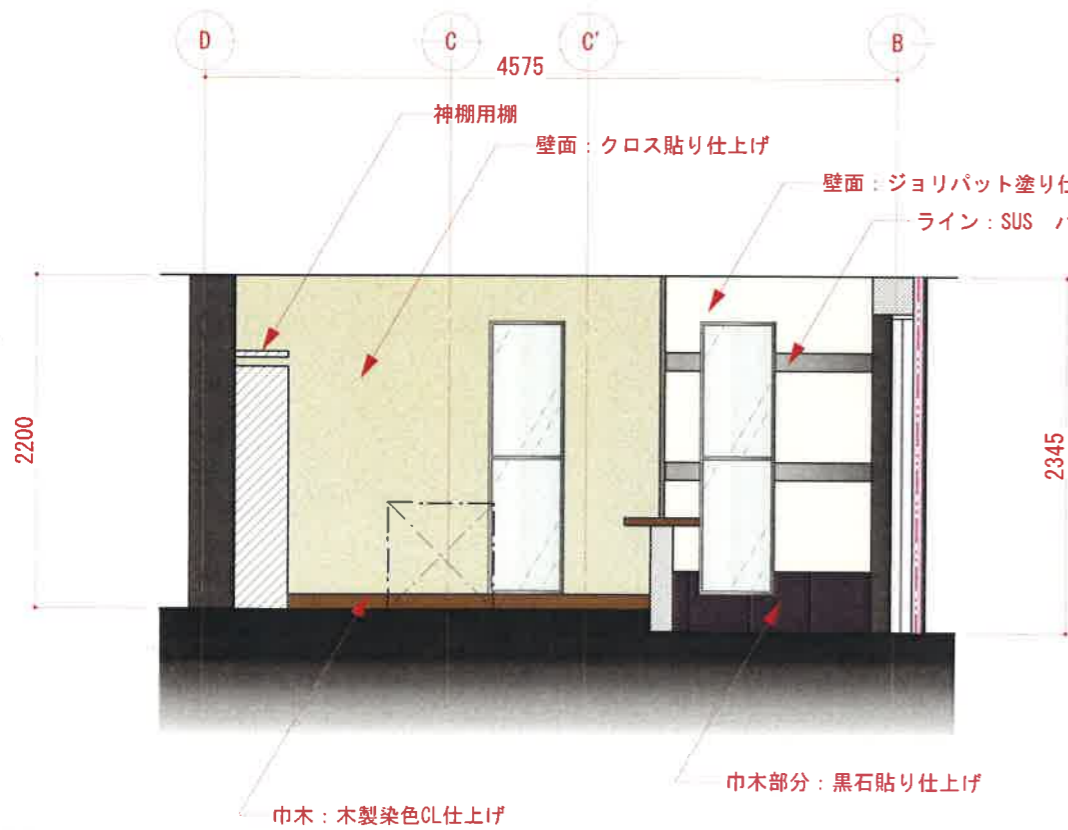
A ELV



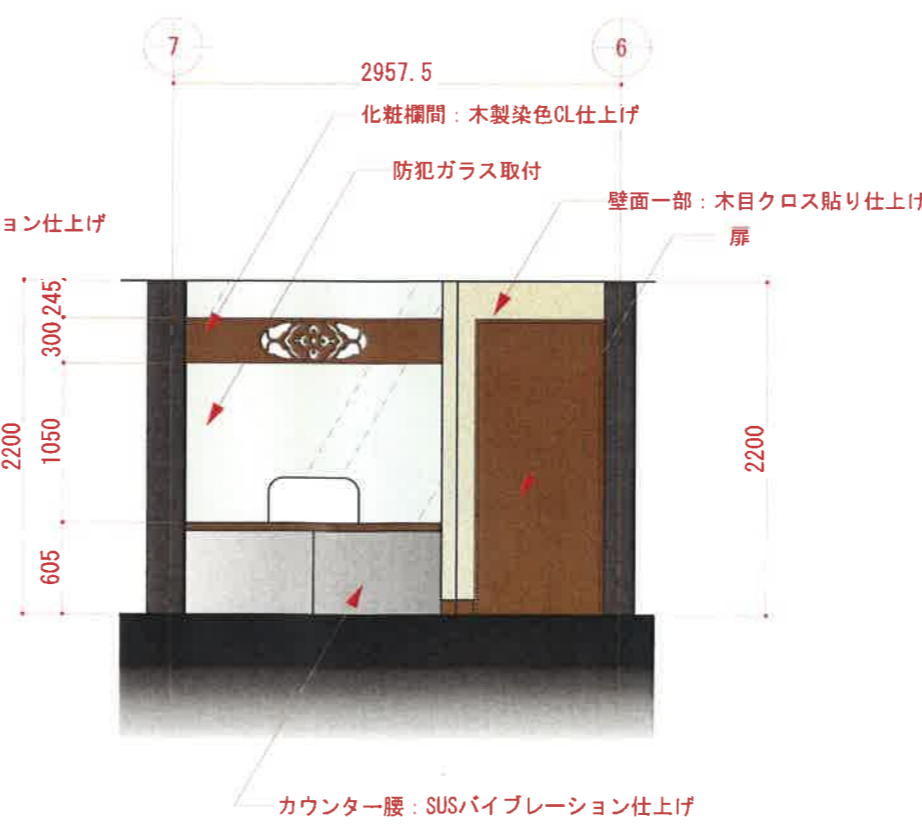
B ELV



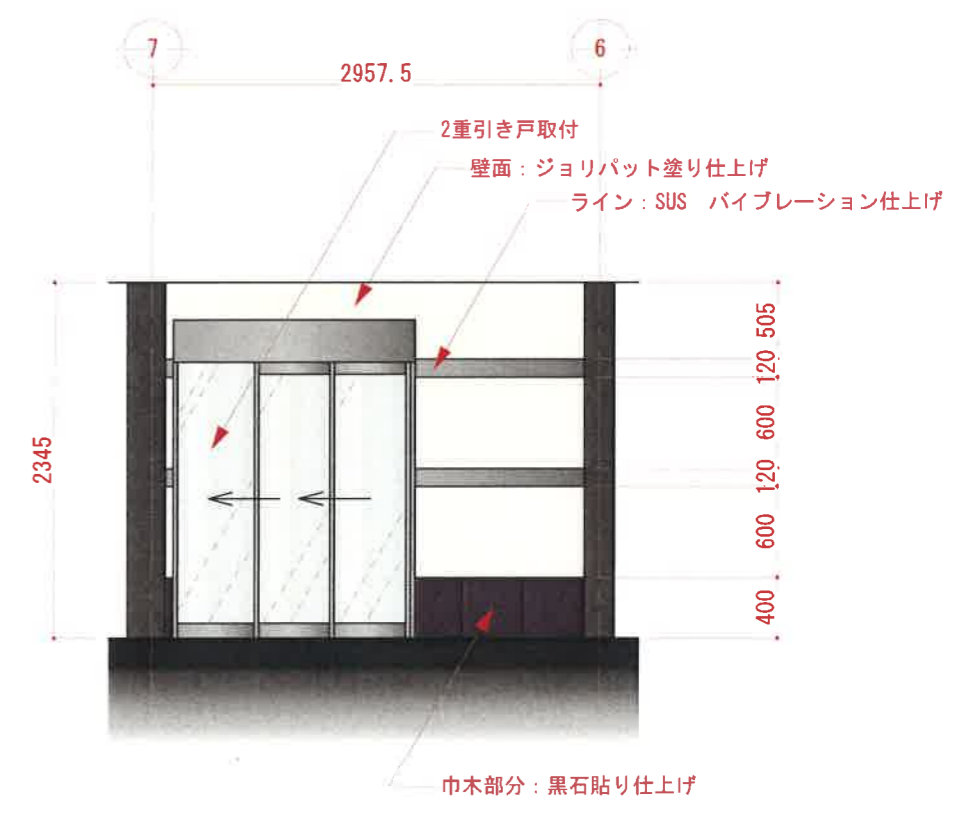
C ELV



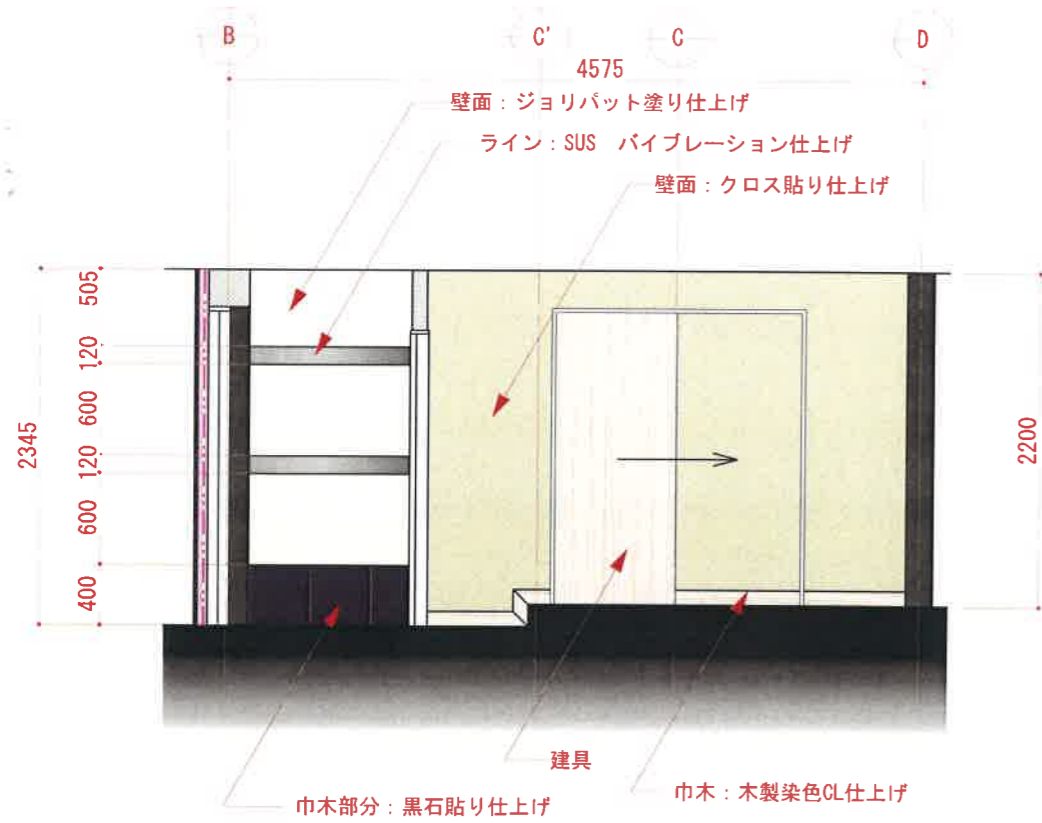
D ELV



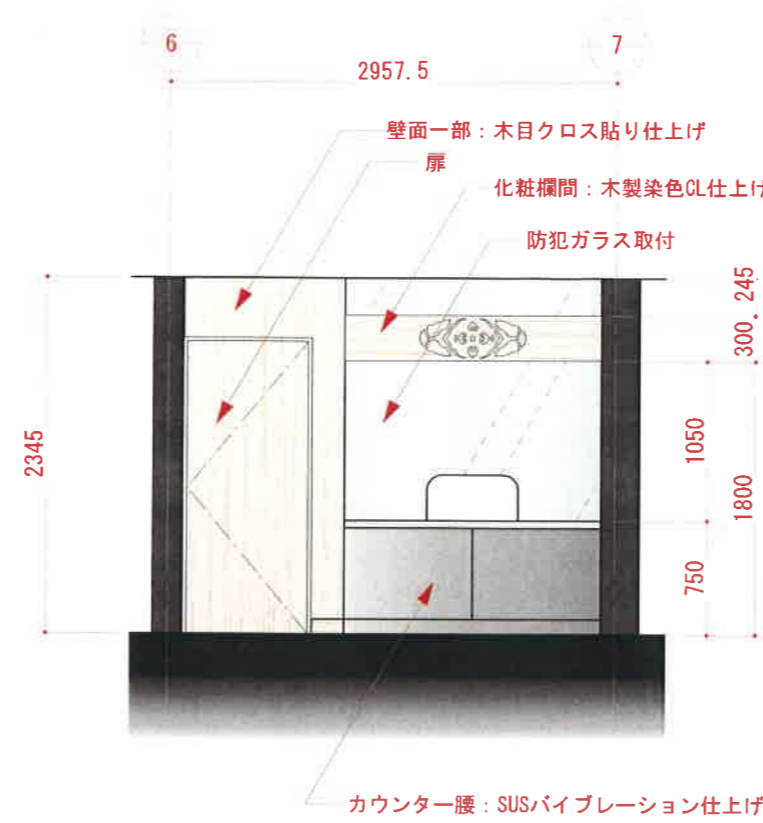
E ELV



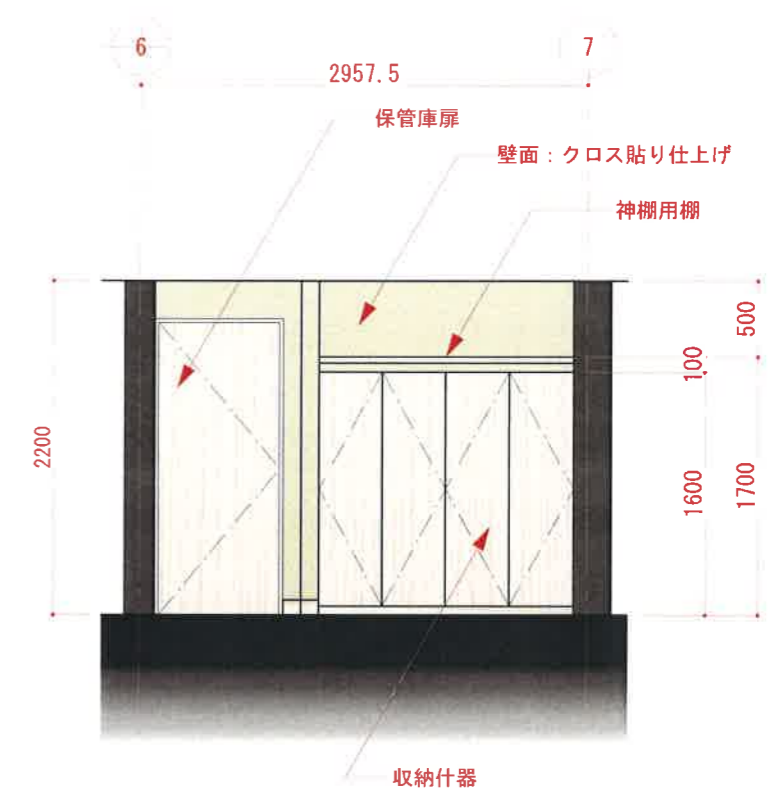
F ELV



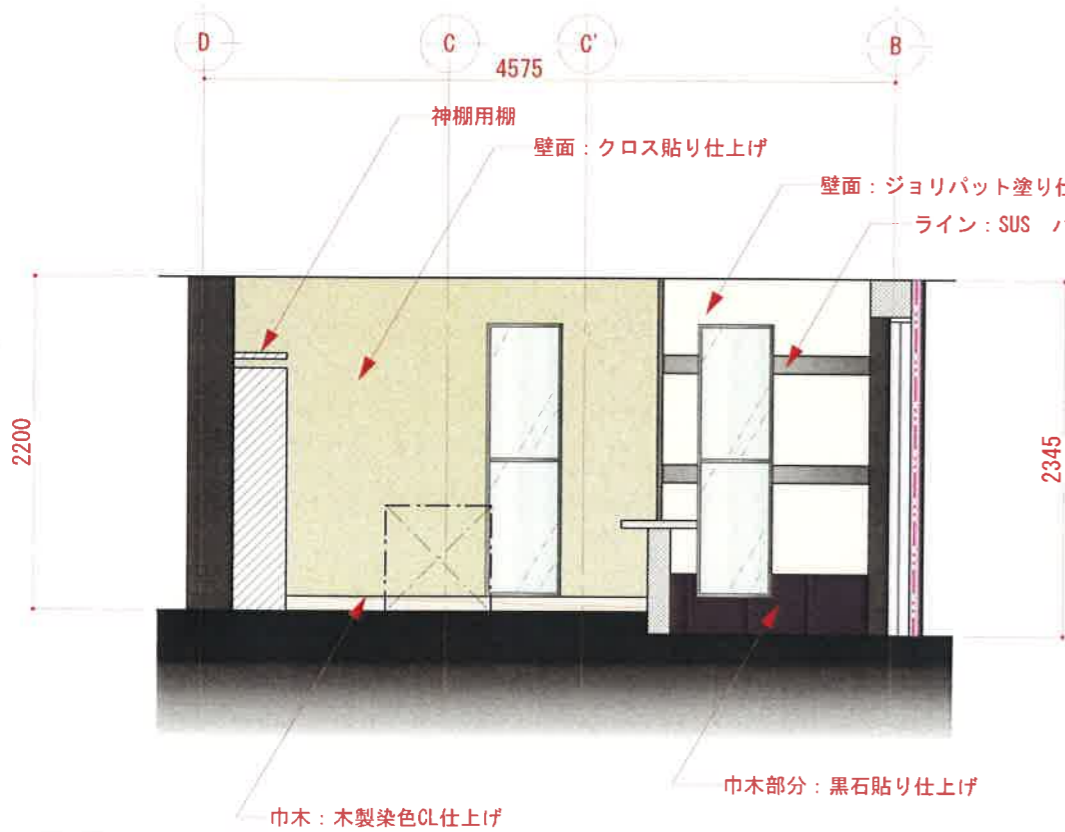
A ELV



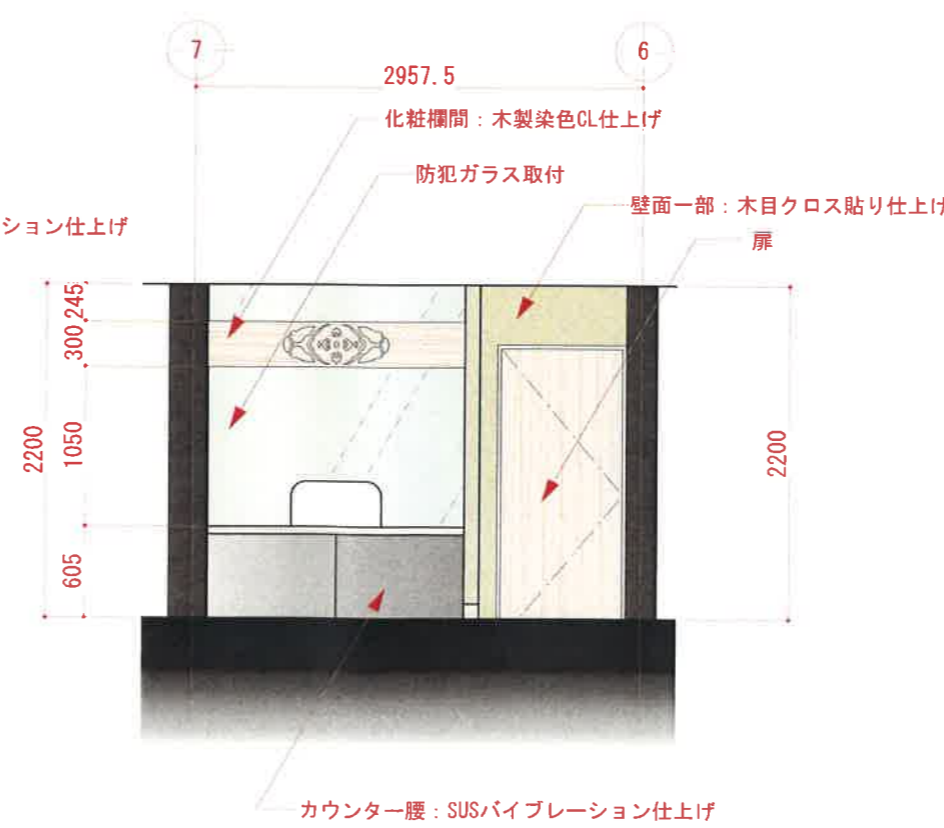
B ELV



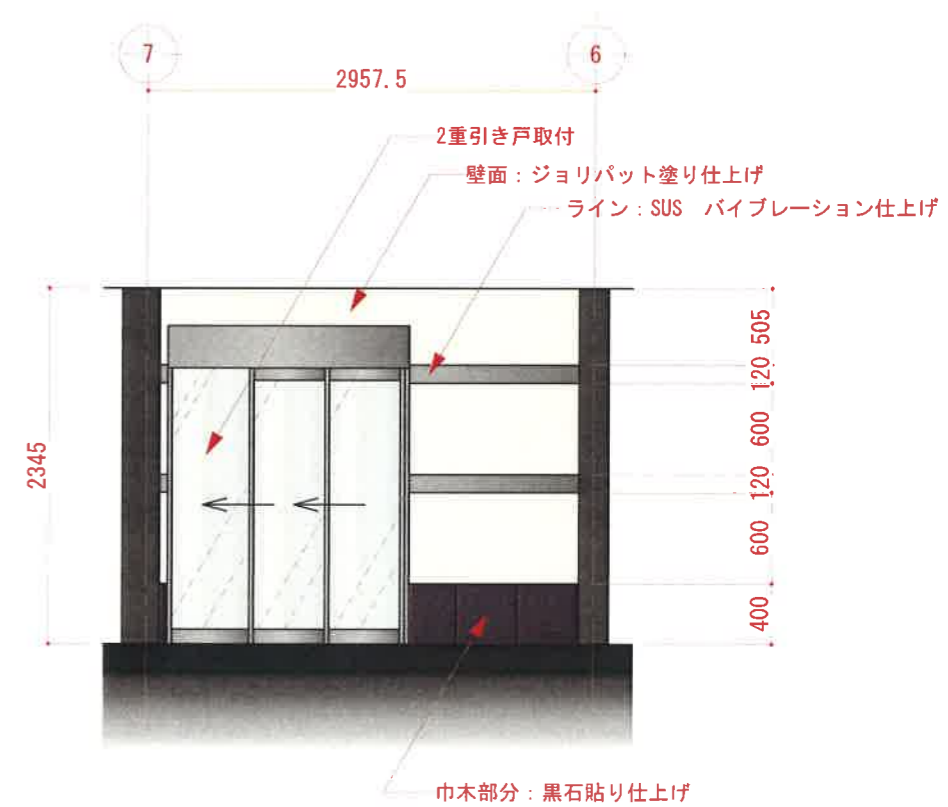
C ELV



D ELV



E ELV



F ELV